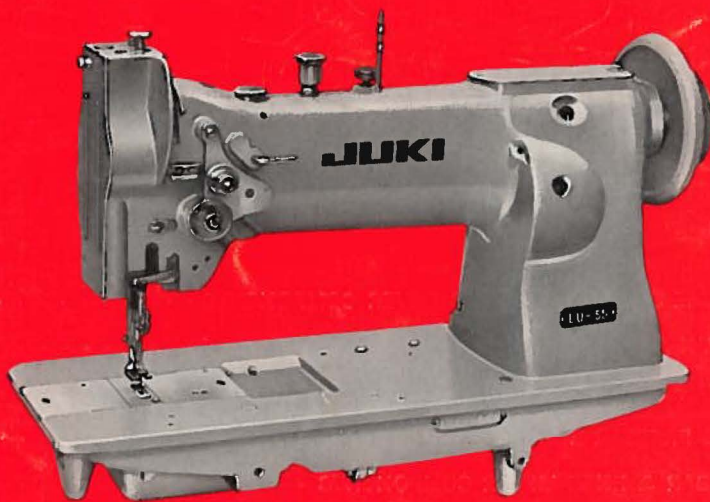


LU-55 LU-53

PARTS LIST OF MODEL

High Speed, Single Needle, Lock Stitch, **UNISON FEED** Industrial Sewing Machine



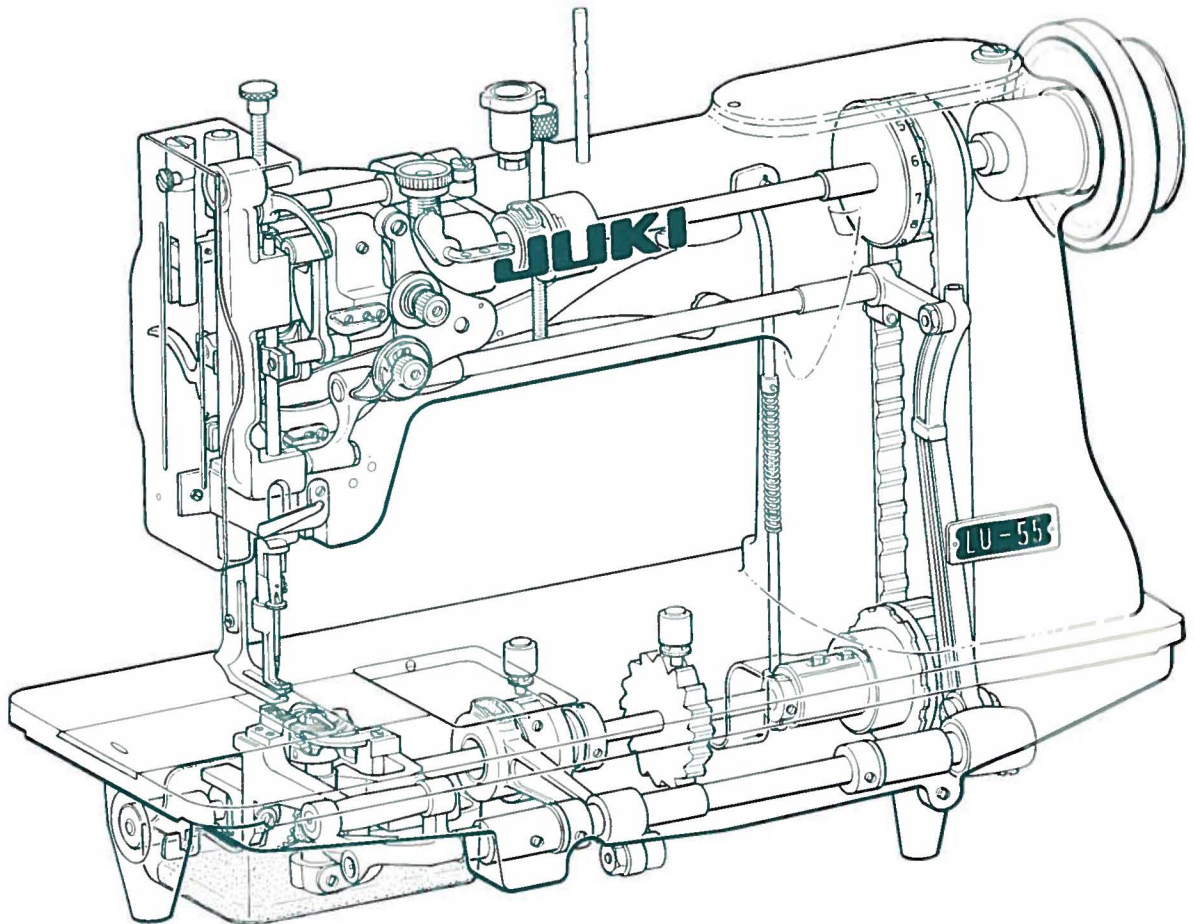
HOW TO MAKE USE OF THIS PARTS LIST

1. This is a consolidated PARTS LIST of Model LU-55, 53
2. This list is divided, as a principle, into various sections according to the functions of parts and also contains illustrations to assist you visually.
For example: If you want some parts for the Upper Main Shaft Components, just refer to the section on 'UPPER MAIN SHAFT Components' etc.
3. Numbers in the first column are reference numbers only, and merely indicate the position of that part in the illustration. Reference numbers should never be used in ordering parts. Always use the part number listed in the second column.
4. At the back of the list will be found a numerical index of all the parts shown in this list. This will facilitate locating the illustration and description when only the part number is known,

NOTE: The large Gothic number on the top line of Reference No. are the new, current parts numbers.

The small parts number shown just below this line is now obsolete.

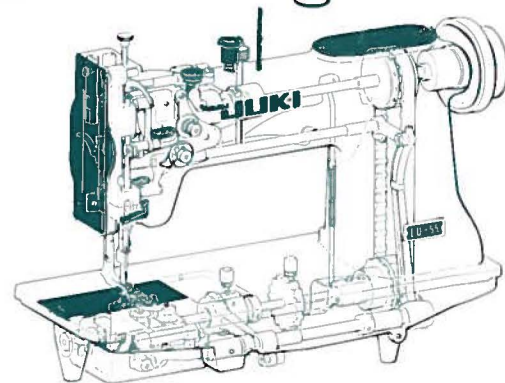
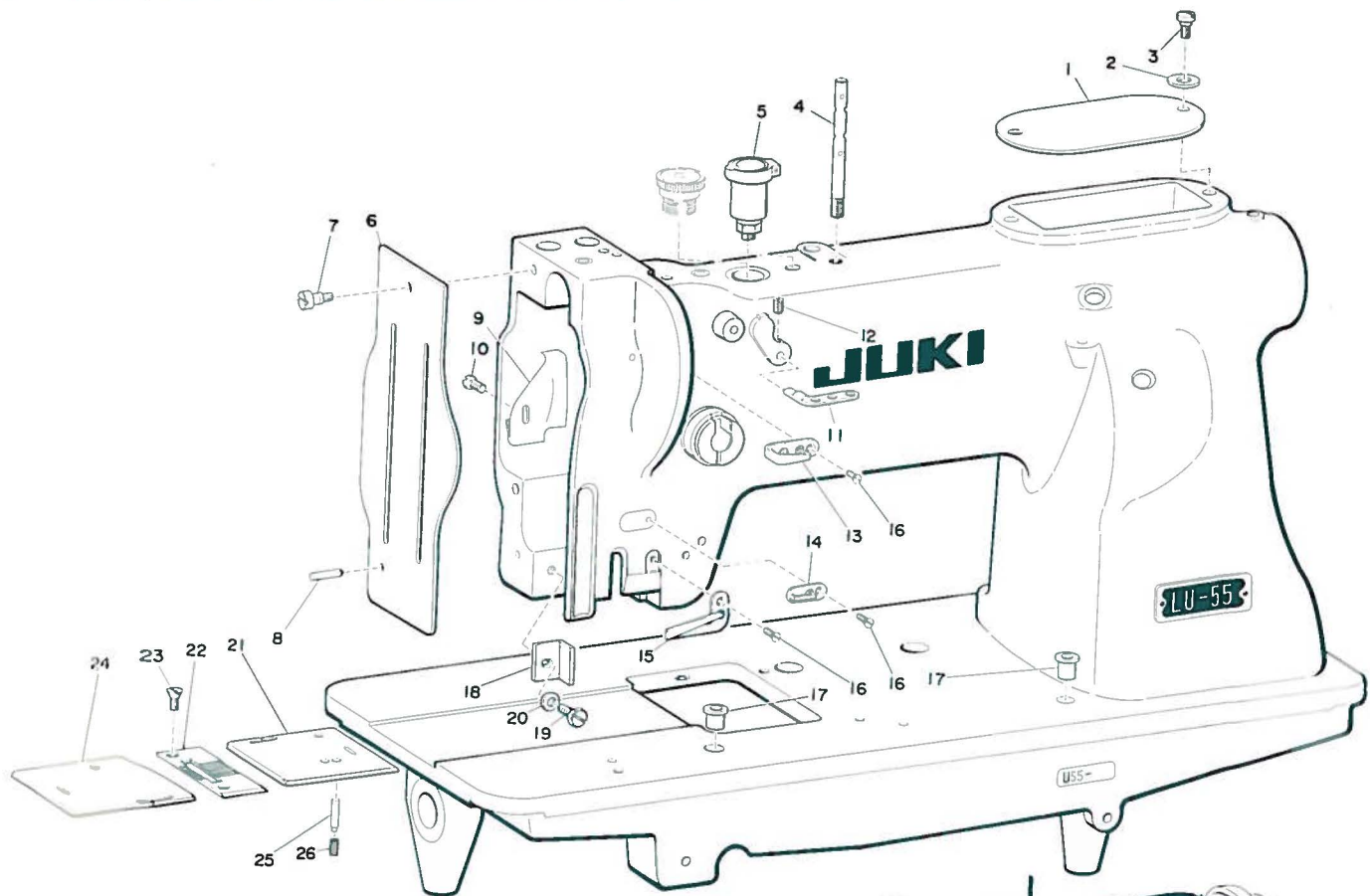
For example: Ref. No. 1 B-1204-051-000 New number
511204 Obsolete Number



CONTENTS

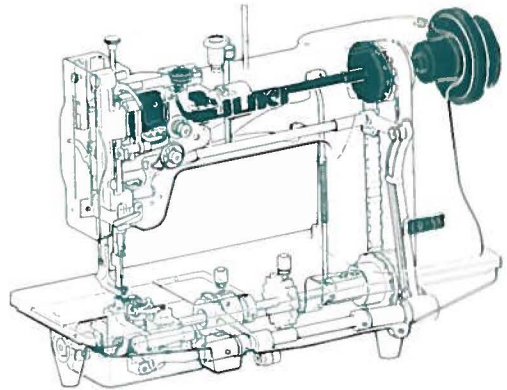
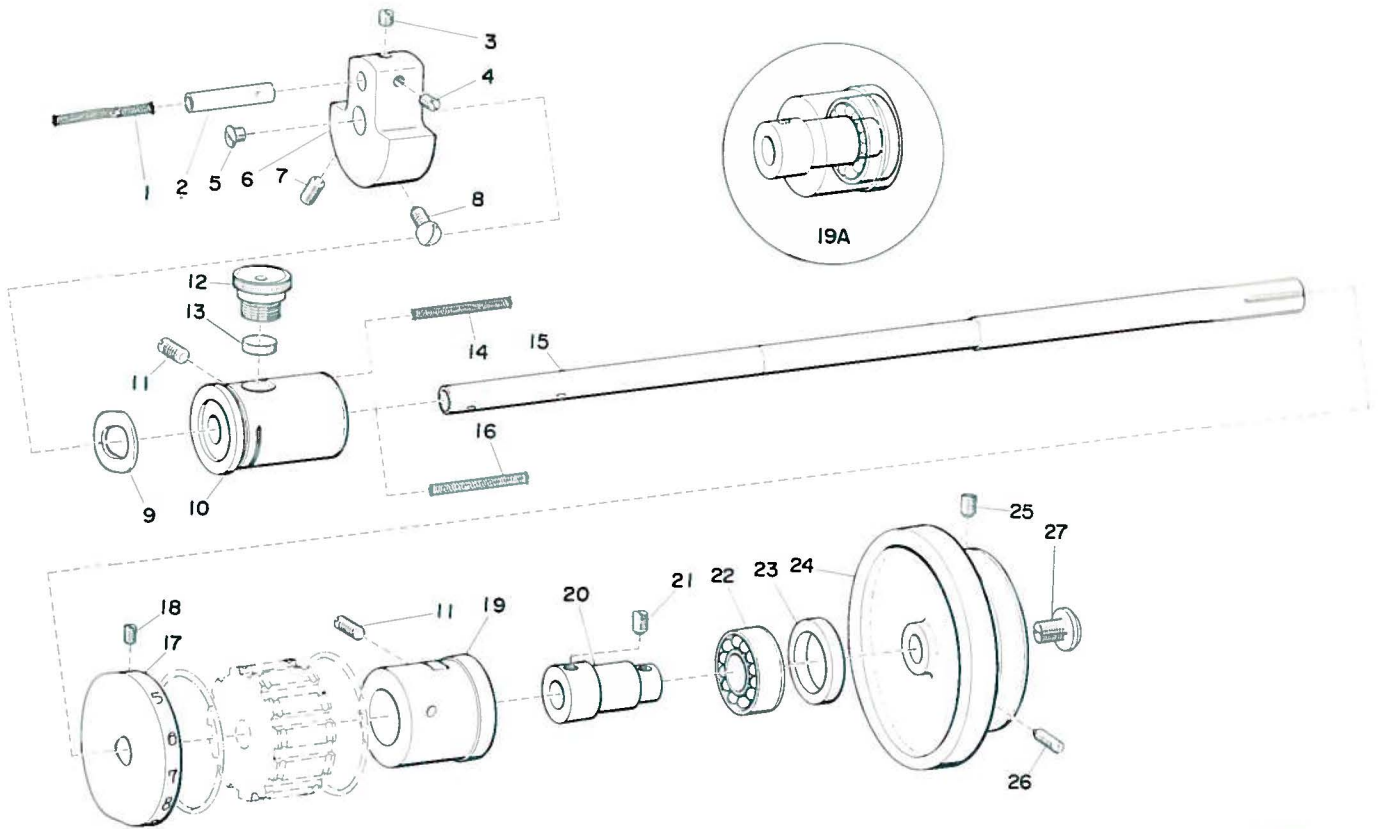
	Page
1 MAIN FRAME & MISCELLANEOUS COVER COMPONENTS	1
2 UPPER MAIN SHAFT COMPONENTS	2
3 NEEDLE BAR FRAME COMPONENTS	3
4 VIBRATING PRESSER BAR ROCK SHAFT COMPONENTS	4
5 PRESSER BAR & KNEE LIFTER COMPONENTS	5
6 SAFETY CLUTCH MECHANISM COMPONENTS	6
7 SAFETY CLUTCH MECHANISM COMPONENTS, EXCLUSIVE FOR MODEL LU-53	7
8 FEED ROCK SHAFT COMPONENTS	8
9 FEED ROCK SHAFT COMPONENTS, EXCLUSIVE FOR MODEL LU-53	9
10 SEWING HOOK SHAFT COMPONENTS	10
11 THREAD CONTROLLER COMPONENTS	11
12 NUMERICAL INDEX OF PARTS	12

MAIN FRAME & MISCELLANEOUS COVER COMPONENTS



Ref. No.	Part No.	Description	Amt. Req.	Ref. No.	Part No.	Description	Amt. Req.
1	B 1150-051-000 511150	Top cover	1	15	B-1131-051-000 511131	Frame thread guide, lower	1
2	B 1152-051-000 511152	• • • Washer	1	16	SS-2090710-SP 0901ph	• • • Screw	4
3	SD-0630241-SD 1003301	• • • Screw	1	17	B-1157-009-000 91157	Bed oil cup	2
4	B-1114-051-000 511114	Needle thread guide pin	1	18	B-1423-051-000 511423	Needle bar frame guide	1
5	B-1155-053-000 511155	Oil cup	1	19	SS-9111010-SK 1182fh	• • • Screw	1
6	B-3101-053-000 531101	Face plate	1	20	WP-0480856-SP W181ph	• • • Washer	1
7	B-3106-019-000 191106	• • • Screw	1	21	B-1113-053-000 531113	Bed slide, right	1
8	B-1103-051-000 511103	• • • Pin	1	22	B-1109-053-000 531109	Throat plate	1
9	B-1140-051-000 511140	Thread take-up oil splasher	1	23	SS-2110910-SP 1101ph	• • • Screw	1
10	SS-3090610-SP 0978ph	• • • Screw	1	24	B-1112-053-000 531112	Bed slide, left	1
11	B-1128-051-000 511128	Three-hole thread eyelet	1	25	B-1105-051-000 511102(2)	Pin, for bed slide, right	1
12	SS-8110510-SP 1151ph	• • • Screw	1	26	B-1106-051-000 511102(3)	• • • Spring	1
13	B-1129-051-000 511129	Frame thread guide, upper	1	27	B-1104-051-000 511102(1)	Pin, for throat plate	1
14	B-1130-051-000 511130	Frame thread guide, middle	1				

UPPER MAIN SHAFT COMPONENTS



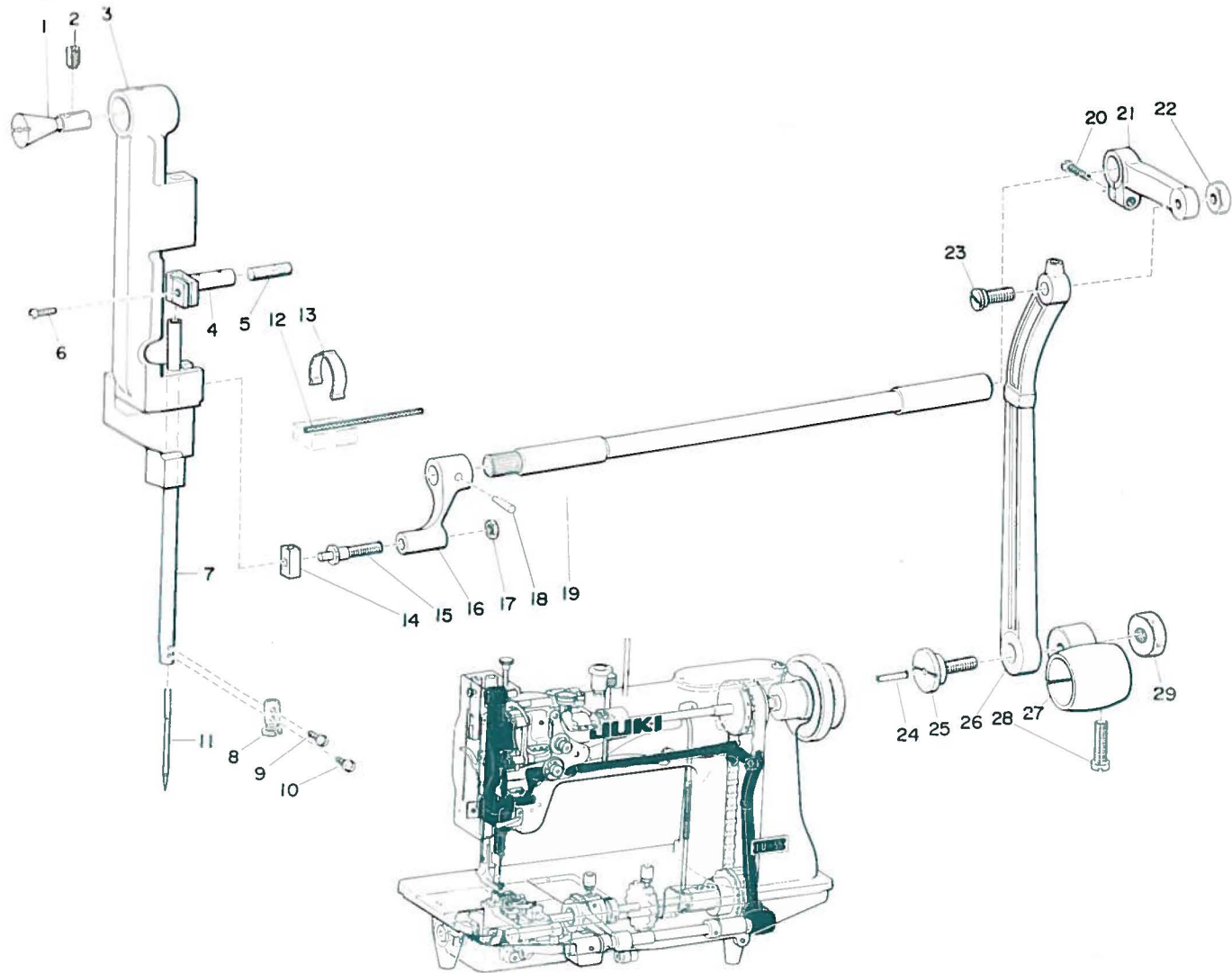
Ref. No.	Part No.	Description	Amt. Req.
1	B 1204-051-000 511204	Needle bar crank pin oil wick	1
2	B 1210-051-000 511210	Needle bar crank pin	1
3	SS-8688053-SK 6857fh	. . . Screw (1)	1
4	SS-8680730-SK 6853fh	. . . Screw (2)	1
5	B 1207-051-000 511207	Plug screw, for upper main shaft	1
6	B 1206-051-000 511206	Counterweight	1
7	SS-8681650-TP 6851ph	. . . Screw	1
8	SS-7681750-TP 6822ph	. . . Screw (S)	1
9	B 1205-051-000 511205	Thrust washer, for front bushing	1
10	B 1202-051-000 511202	Upper main shaft front bushing	1
11	SS-8151350-SP 1551ph	. . . Screw	2
12	B 3501-051-000 513501	. . . Oil filler sleeve	1
13	B 1203-051-000 511203	. . . Oil felt	1
14	B 1204-051-000 511204	. . . Oil wick	1
*15	B 1201-051-000 511201	Upper main shaft	1
16	B 1204-051-000 511204	. . . Oil wick	1
17	B 1220-055-000	Stitch graduator	1
18	SS 8151230 SP 1557ph	. . . Screw	2
19	B 1216-051-000 511216	Upper main shaft rear bushing (1)	1

Ref. No.	Part No.	Description	Amt. Req.
20	B-1217-051-000 511216(2)	Upper main shaft rear bushing (2)	1
21	SS-8150710-SP 1555ph	. . . Screw	2
22	B-1219-051-000 511219	Upper main shaft rear bearing	1
23	B-1218-051-000 511218	Upper main shaft rear bearing retaining collar	1
*24	B-1227-051-000 511227	Hand wheel	1
25	SS-8152030-SP 1556ph	. . . Screw	1
26	SS-8151780-SP 1567ph	. . . Screw (S)	1
27	B-1233-012-000	. . . Adjusting screw	1

EXCLUSIVE PARTS FOR MODEL 11J-53

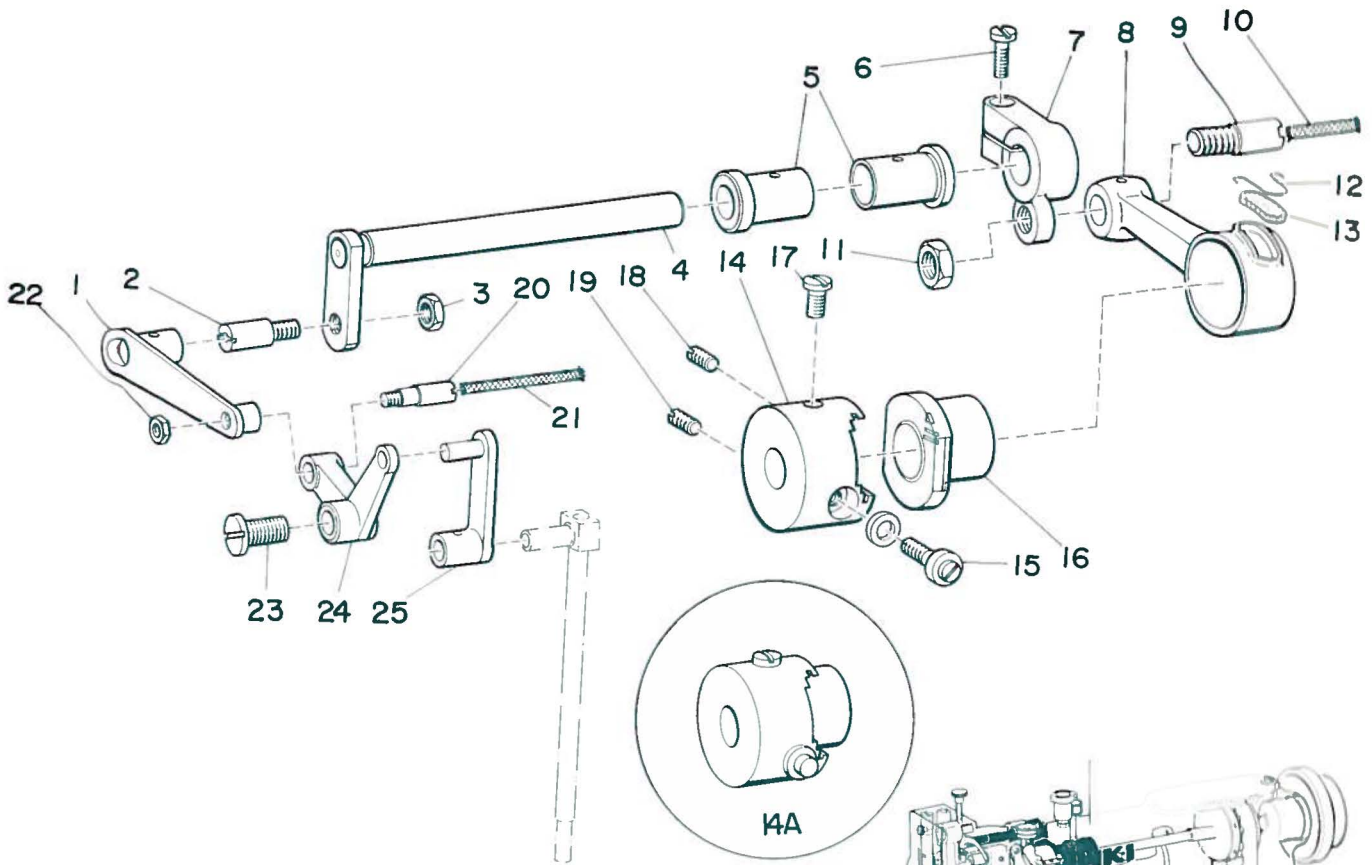
15	B 1201-053-000 531201	Upper main shaft	1
24	B-1227-053-000 531227	Hand wheel	1

NEEDLE BAR FRAME COMPONENTS



Ref. No.	Part No.	Description	Amt. Req.	Ref. No.	Part No.	Description	Amt. Req.
1	B-1421-051-000 511421	Needle bar frame taper stud	1	16	B-1428-051-000 511428	Needle bar frame rock shaft	
2	SS-8151-160-SK 1563fh	• • • Screw	1	17	NS-6620310-SP N621ph	Lock nut, for slide block stud	1
3	B-1420-053-000 531420	Needle bar frame	1	18	PT-0301600-SO TP3016	Knock pin, for front crank	1
4	B-1411-053-000 531411	Needle bar connection	1	19	B-1429-051-000 511429	Needle bar frame rock shaft	1
5	B-1412-051-000 511412	• • • Oil felt	1	20	SS-6151440-SP 1525ph	Screw, for rear crank	1
6	SS-7090910-SP 0911ph	• • • Screw	1	21	B-1431-051-000 511431	Needle bar frame rock shaft rear crank	1
7	B-1401-053-000 531401	Needle bar	1	22	NS-6160520-SP N161ph	• • • Lock nut, for hinge screw	1
8	B-1419-053-000 531419	Needle bar thread guide	1	23	SD-0790801-SP D079105h	• • • Hinge screw	1
9	SS-7060310-SP 0622ph	• • • Screw	1	24	B-1204-051-000 511204	Oil wick, for driving rod	1
10	SS-7080510-SP 0828ph	Screw, for needle	2	25	SD-0950801-SP D095002h	Hinge screw, for driving rod crank	
11	MD-1300-2300	Needle (DI×3, 29×1, #23)	1	26	B-1434-051-000 511434	Needle bar frame rock shaft driving rod	1
12	B-1438-051-0A0 511438S	Oil wick assembly, for front crank	1	27	B-1435-051-000 511435	Needle bar frame rock shaft driving rod crank	1
13	B-1437-051-000 511437	Oil wick retainer, for front crank	1	28	SS-7151210-SP 1522ph	• • • Clamp screw	1
14	B-1425-051-000 511425	Needle bar frame slide block	1	29	NS-6700420-SP N705ph	• • • Nut	1
15	B-1426-051-000 511426	Needle bar frame slide block stud	1				

VIBRATING PRESSER BAR ROCK SHAFT COMPONENTS



Ref. No.	Part No.	Description	Amt. Req.
1	B-1458-053-000 531458	Vibrating presser bar rock shaft connecting link	1
*2	B-1457-055-000	... Screw stud	1
3	NS-6660430-SP N661ph	... Lock nut	1
4	B-1456-053-000 531456	Vibrating presser bar rock shaft	1
5	B-1455-053-000 531455	... Bushing	2
6	SS-7661540-SP 6623ph	Screw, for crank	1
7	B-1454-053-00A 531454(1)	Vibrating presser bar rock shaft crank	1
8	B-1453-053-000 531453	Vibrating presser bar rock shaft connecting rod	1
9	B-1454-053-00B 531454(2)	Screw stud, for crank	1
10	B-1204-051-000 511204	... Oil wick	1
11	NS-6660430-SP N661ph	... Lock nut	1
12	B-1702-012-000 121702	Oil felt retainer	1
13	B-1213-012-000 121213	Oil felt, for connecting rod	1
14	B-1450-053-000 531450	Adjustable feed eccentric body	1
15	B-1452-053-000 531452	Adjusting screw, for feed eccentric	1
16	B-1451-053-000 531451	Adjustable feed eccentric	1
17	SS-7090610-SP 09210ph	... Screw	1
18	SS-8151280-SP 15512ph	Screw, for feed eccentric body	1
19	SS-8151150-SP 1552ph	Screw, for feed eccentric body	1

Ref. No.	Part No.	Description	Amt. Req.
20	B-1459-053-00B 531459(2)	L shaped link connecting screw stud	1
21	B-1204-041-000 511204	... Oil wick	1
22	NS-6110310-SP N112ph	... Lock nut	1
23	B-1459-053-00A 531459(1)	L shaped link	1
24	B-1465-053-000 531465	Vibrating presser bar driving link	1

EXCLUSIVE PART FOR MODEL LU-53

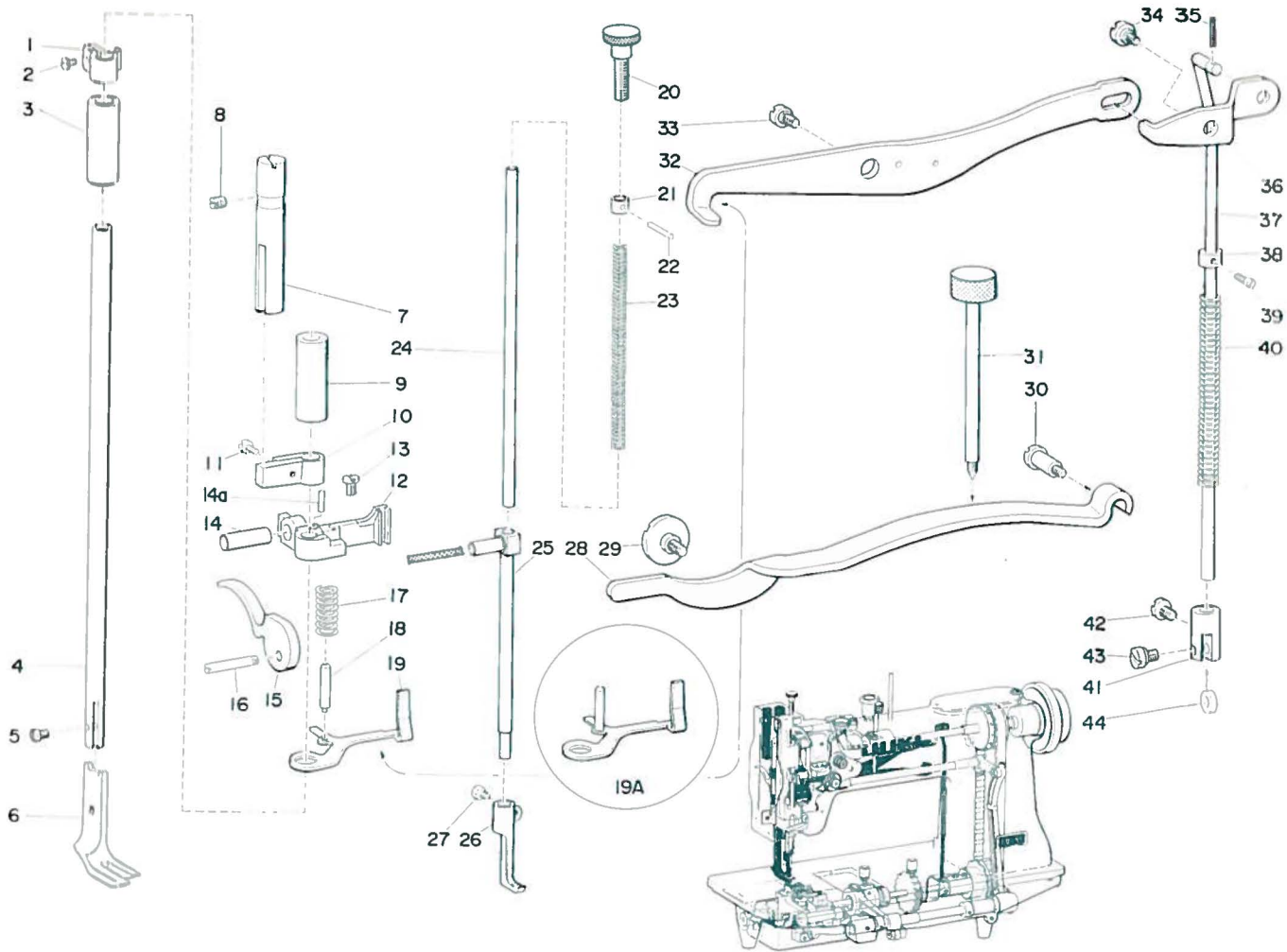
2	B-1457-053-000	Screw stud	1
---	----------------	------------	---

(Continued to page 5)

PRESSER BAR & KNEE LIFTER COMPONENTS

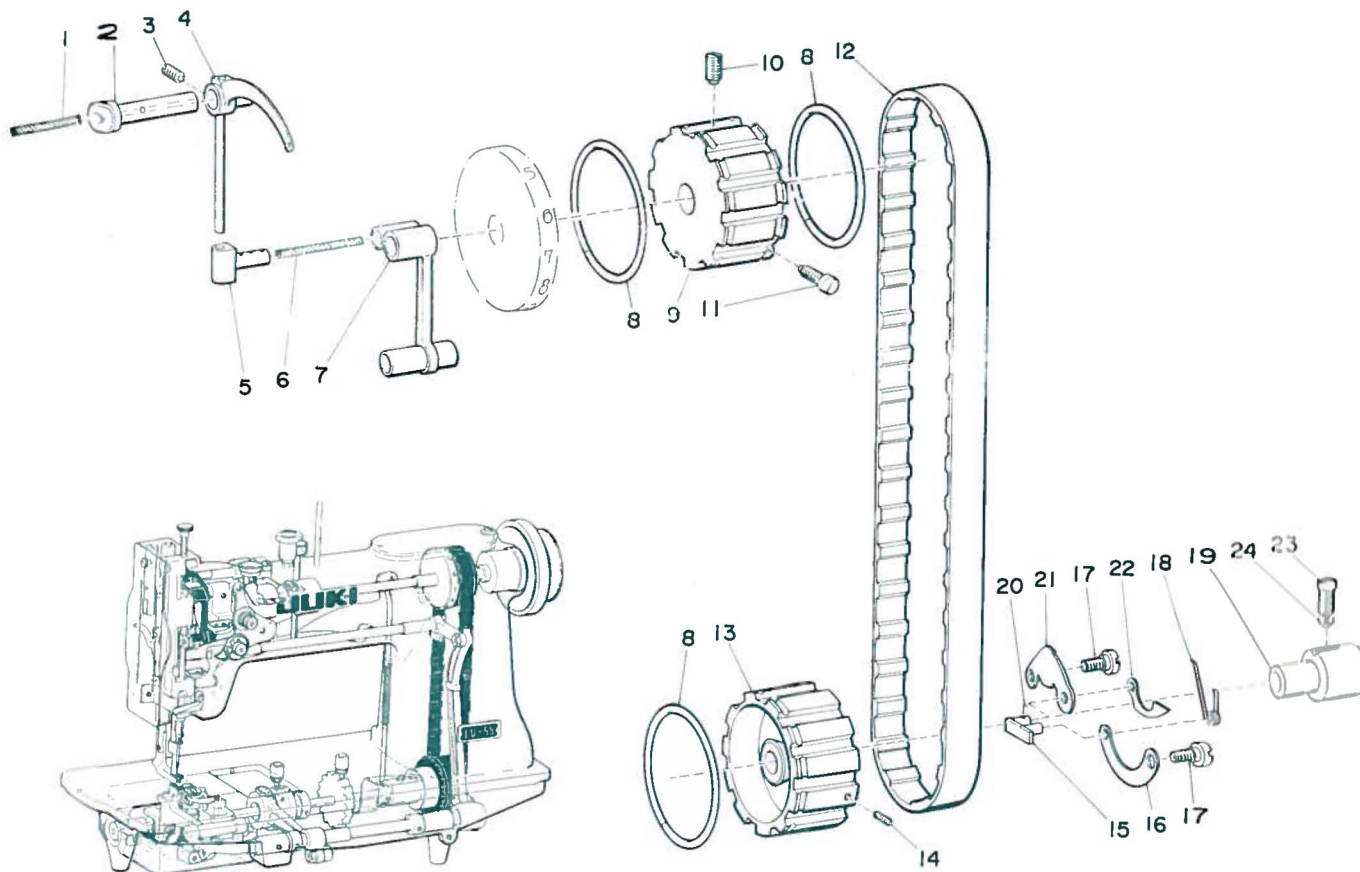
1	B-1507-051-000 511507	Lifting presser bar connection	1
2	SS-7090910-SP 0911ph	... Screw	1
3	B-1503-051-A00 511503	Lifting presser bar bushing	1
4	B-1501-040-000 401501	Lifting presser bar	1

PRESSER BAR & KNEE LIFTER COMPONENTS



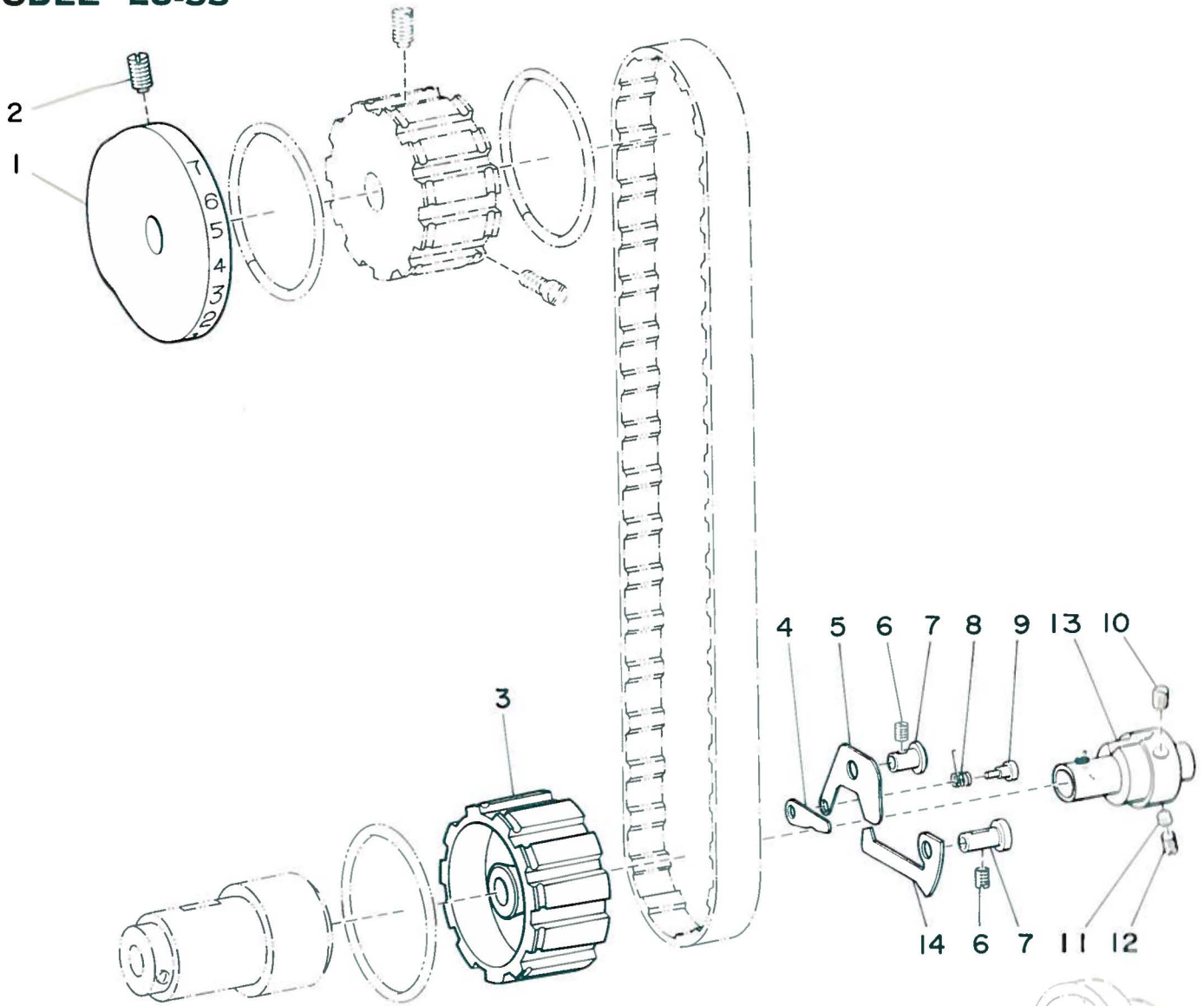
Ref. No.	Part No.	Description	Amt. Req.	Ref. No.	Part No.	Description	Amt. Req.
5	SS 6090910-SP 0925ph	Screw, for presser foot	1	25	B-1466-053-000 531466	Vibrating presser bar	1
6	B-1525-053-000 531525	Presser foot	1	26	B-1470-053-000 531470	Vibrating presser foot	1
7	B-1502-051-000 511502	Lifting presser bar guide sleeve	1	27	SS-9090640-SP 0981ph	. . . Clamp screw	1
8	SS 8150750-SP 1553ph	. . . Screw	1	28	B-1505-053-000 531505	Lifting presser bar adjusting plate spring	1
9	B-1503-051-B00 511503	Lifting presser bar bushing	1	29	SD-0800481-SP D050003h	Hinge screw, for No. 12	1
10	B-1504-051-000 511504	Lifting presser bar connection	1	30	SD-0801601-SP D080013h	Screw stud, for No. 28	1
11	SS 7090910-SP 0941ph	. . . Screw	1	31	B-1509-051-000 511509	Pressure regulating thumb screw	1
12	B-1460-053-00A 531460 (1)	Hand lifter mounting bracket	1	32	B-3409-053-000 533409	Knee lifter front lever	1
13	SS 7111310-SP 1136ph	. . . Clamp screw	1	33	SD-0790361-SP D079401h	. . . Hinge screw	1
14	B-1460-053-00B 531460 (2)	. . . Connecting pin	1	34	SD-0790361-SP D079401h	Hinge screw, for rear lever	1
15	B-1512-051-000 511512	Hand lifter	1	35	PD-0231100-0B DP25126	Cotter pin, for rear lifting bar	1
16	B-1515-051-000 511515	Hand lifter shaft	1	36	B-3410-051-000 513410	Knee lifter rear lever	1
17	B-1462-053-00B 531462	Thread release spring	1	37	B-3413-053-000 533413	Rear lifting bar	1
18	B-1461-053-000 531461 (2)	Thread release spring pin	1	38	CS-0510713-SC S05101	Rear lifting bar spring retaining collar	1
19	B-1461-053-00A 531461 (1)	Thread release guide	1	39	SS-7110540-SP 1127ph	. . . Screw	1
20	B-1469-053-000 531469	Adjusting thumb screw, for vibrating presser bar	1	40	B-3414051-000 513414	Rear lifting bar spring	1
21	B-1467-053-00B 531467 (2)	Retaining collar, for spring	1	41	B-3416-051-000 513416 (1)	Rear lifting bar roller holder	1
22	B-1467-053-00C 531467 (3)	Retaining collar pin	1	42	SS-7110510-SP 1121ph	. . . Screw	1
23	B-1468-053-000 531468	Vibrating presser bar spring	1	43	SD-0550801-SP D055007h	. . . Screw stud	1
24	B-1467-053-00A 531467 (1)	Vibrating presser bar spring pole	1	44	B-3417-051-000 513416 (2)	Rear lifting bar roller	1

SAFETY CLUTCH MECHANISM COMPONENTS

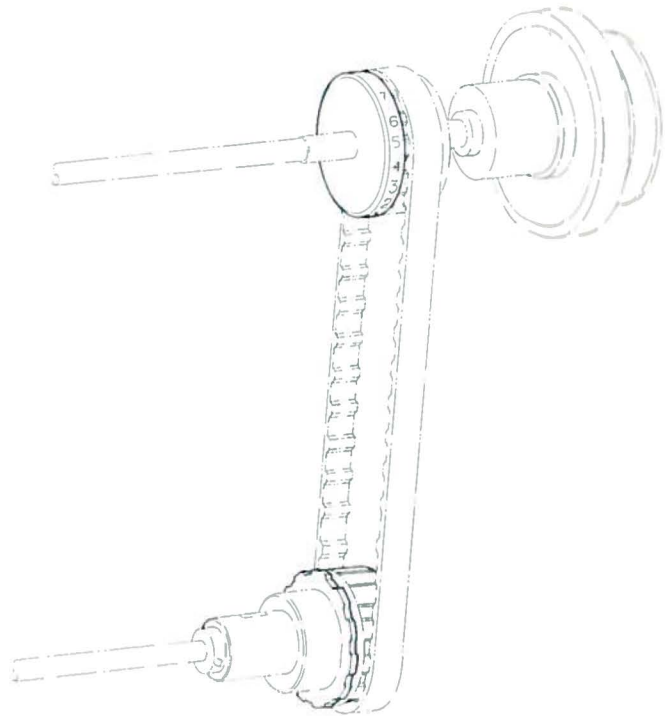


Ref. No.	Part No.	Description	Amt. Req.	Ref. No.	Part No.	Description	Amt. Req.
1	B 1 204-051-000 511204	Oil wick, for take-up lever pin	1	20	B-1314-055-000	Safety clutch small link pin	1
2	B 1 906-051-000 511906	Take-up lever pin	1	21	B-1307-053-M00	Safety clutch hook	1
3	SS-8151150-SP 1552ph	. . . Screw	1	22	B-1308-055-000	Safety clutch counter hook	1
4	B 1 905-053-000 511905	Take-up lever	1	23	SS-6661110-SK 6621fh	Clamp screw, for safety clutch body	2
5	B 1 907-051-000 511907	Take-up lever thrust pin	1	24	B-1833-053-000	. . . Pin	1
6	B 1 204-051-000 511204	. . . Oil wick	1				
7	B 1 408-051-000 511408	Needle bar crank rod	1				
8	B 1 214-019-000 191214	Sprocket wheel ring	3				
9	B 1 302-051-000 511302	Sprocket wheel, upper	1				
10	SS-7181750-TP 6822ph	. . . Screw (B)	1				
11	SS-8681650-TP 6851ph	. . . Screw (A)	1				
12	B 1 301-051-000 511301	Timing belt	1				
13	B 1 303-055-000	Sprocket wheel, lower	1				
14	SS-8090540-SP 0956ph	Positioning screw, for safety clutch spring	1				
15	B 1 310-055-000	Safety clutch small link	1				
16	B 1 305-055-000	Safety clutch spring	1				
17	B 1 315-055-000	Hinge screw, for safety clutch hook	2				
18	B 1 309-055-000	Safety clutch counter-hook spring	1				
19	B 1 311-055-000	Safety clutch body	1				

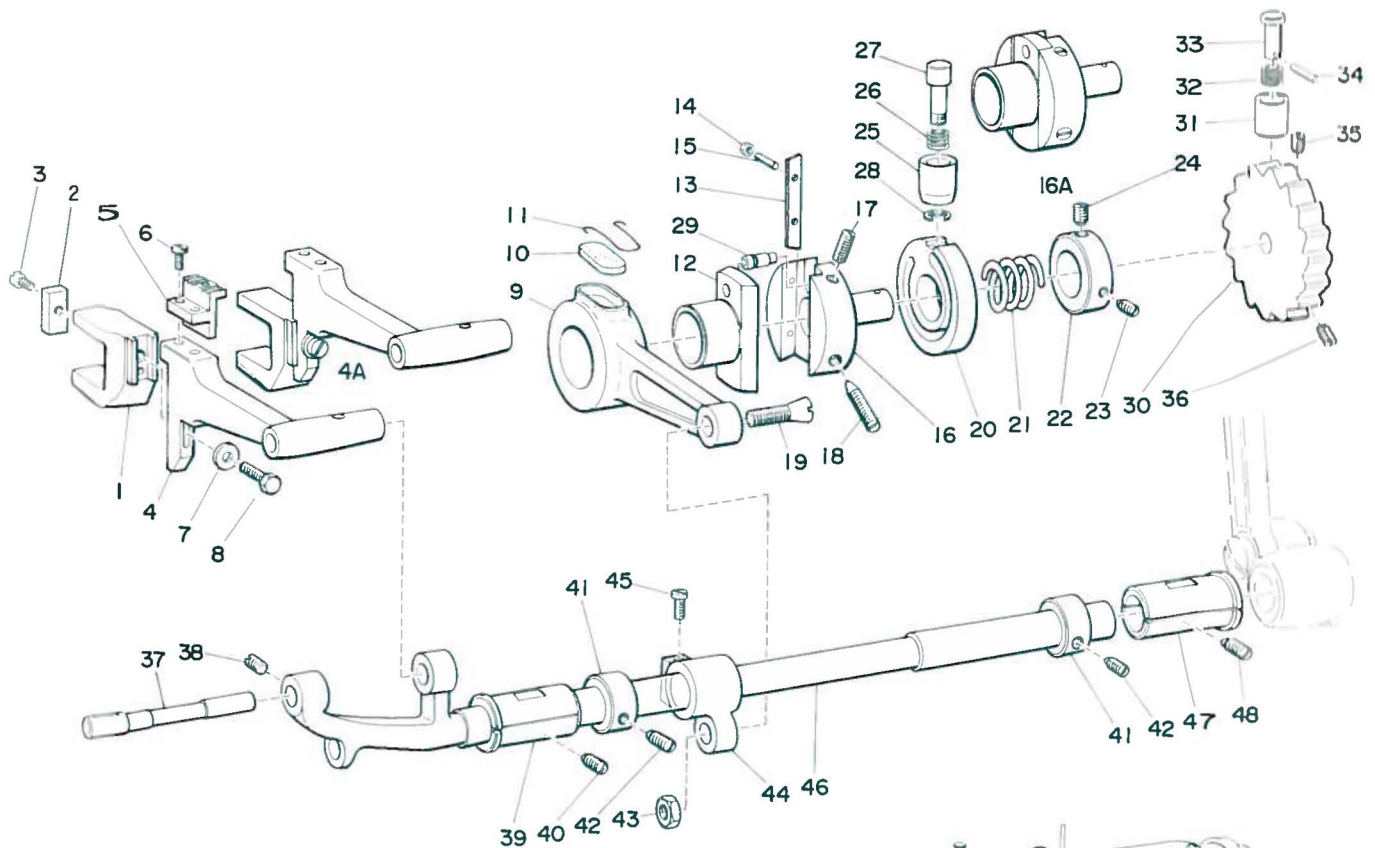
SAFETY CLUTCH MECHANISM COMPONENTS, EXCLUSIVE FOR MODEL LU-53



Ref. No.	Part No.	Description	Amt. Req.
1	B-1220-053-000 531220	Stitch graduator	1
2	SS-8621340-SP 6255ph	... Screw	2
3	B-1303-053-000 531303	Sprocket wheel, lower	1
4	B-1308-053-000 531303 (5)	Safety clutch counter-hook	1
5	B-1307-053-000 531303 (4)	Safety clutch hook	1
6	SS-8620610-SK 6252fh	Screw, for pin	2
7	B-1306-053-000 531303 (3)	Pin, for safety clutch hook & spring	2
8	B-1309-053-000 531303 (6)	Safety clutch counter-hook spring	1
9	B-1310-053-000 531303 (7)	Safety clutch counter-hook pin	1
10	SS-8680540-SK 6853fh	Screw (A), for safety clutch body	1
11	B-1304-053-000 531304	Safety clutch body pin	1
12	SS-8680730-SK 6854fh	Screw (B), for safety clutch body	1
13	B-1311-053-000 531303 (8)	Safety clutch body	1
14	B-1305-053-000 531305	Safety clutch spring	1



FEED ROCK SHAFT COMPONENTS

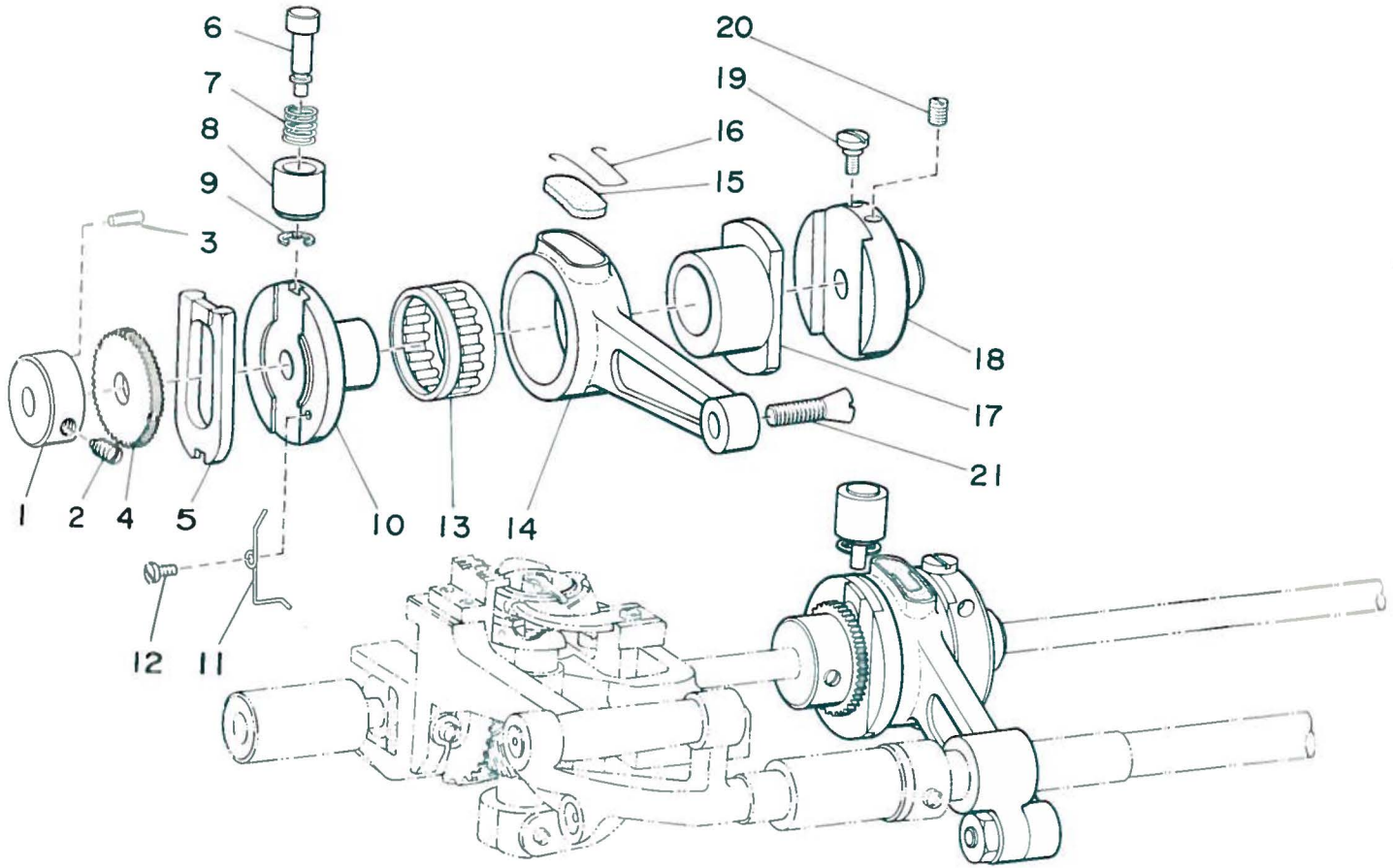


Ref. No.	Part No.	Description	Amt. Req.
1	B 1604-051-000 511604	Feed bar fork	1
2	B 1605-051-000 511605	Feed bar fork oil supply felt	1
3	SS 5080710-SP 0839ph	• • • Screw	1
*4	B 1602-055-000	Feed bar	1
5	B 1613-053-000 531613	Feed dog	1
6	B 1611-055-000	• • • Screw	2
7	WS 0651510-KP SW651ph	Washer, for feed bar fork set screw	1
8	SS 9151440-SP 1592ph	Screw, for feed bar fork	1
9	B 1614-057-000 571614	Feed rock shaft crank connecting rod	1
10	B-1702-012-000 121702	• • • Oil supply felt	1
11	B-1213-012-000 121213	• • • Oil supply felt retainer	1
12	B 1620-057-000 571620	Feed eccentric	1
13	B 1622-057-000 571622	Feed eccentric gib	1
14	NS 6080210-SP N081ph	• • • Nut	2
15	B 1621-405-000 4051621	• • • Screw	2
16	B-1621-055-000	Feed eccentric body	1
17	SS 8151780-SP 1567ph	• • • Screw (B)	1
18	SS 8151770-SK 1550ph	• • • Screw (A)	1
19	B 1621-012-A00 121621 (A)	Connecting screw, for feed rock shaft crank	1
20	B-1626-057-000 571626	Feed eccentric guide	1
21	B-1624-057-000 571624	Feed eccentric body spring	1
22	B-1625-057-000 571625	Feed eccentric body spring retaining collar	1
23	SS 8110510-SP 1151ph	• • • Screw (A)	1
24	SS 8110750-SP 1157ph	• • • Screw (B)	1

Ref. No.	Part No.	Description	Amt. Req.
25	B-1637-055-000	Feed eccentric adjusting knob sleeve	1
26	B-1639-051-000 511639	Feed eccentric adjusting knob spring	1
27	B-1536-055-000	Feed eccentric adjusting knob	1
28	B-1638-051-000 511638	Feed eccentric adjusting knob retaining ring	1
29	B-1623-057-000 571623	Feed eccentric leading pin	1
30	B-1314-057-000 571314	Safety clutch ratchet gear	1
31	B-1313-055-000	Safety clutch knob sleeve	1
32	B-1639-051-000 511639	Safety clutch knob spring	1
33	B-1312-055-000	Safety clutch knob	1
34	B-1314-055-000	Safety clutch small link pin	1
35	SS-8151780-SP 1567ph	Screw (A), for ratchet gear	1
36	SS-8152080-SP 1561ph	Screw (B), for ratchet gear	1
37	B-1603-051-000 511603	Feed bar shaft	1
38	SS 8110510-SP 1151ph	• • • Screw	2
39	B-1607-051-000 511607	Feed rock shaft front bushing	1
40	SS 8151550-SP 1554ph	• • • Screw	2

(Continued to page 9)

FEED ROCK SHAFT COMPONENTS, EXCLUSIVE FOR MODEL LU-53



Ref. No.	Part No.	Description	Amt. Req.	Ref. No.	Part No.	Description	Amt. Req.
1	CS-0951015-SH S09502h	Ratchet gear thrust collar	1	6	B-1636-053-000 531636	Feed eccentric adjusting knob	1
2	SS-8151150-SP 1552ph	... Screw	2	7	B-1639-051-000 511639	... Spring	1
3	B-1627-051-000 511627	... Connecting pin	1	8	B-1637-053-000 531637	... Bushing	1
4	B-1628-051-000 511628	Ratchet gear	1	9	B-1638-051-000 511638	... Retaining ring	1
5	B-1623-051-000 511623	Ratchet pawl	1	10	B-1626-051-000 511626	Feed eccentric guide	1
				11	B-1624-051-000 511624	Ratchet pawl spring	1
				12	SD-0260271-SP D026001h	... Screw	1
				13	B-1618-051-000 511618	Crank connecting rod needle bearing	1
				14	B-1614-051-000 511614	Feed rock shaft crank connecting rod	1
				15	B-1702-012-000 121702	... Oil supply felt	1
				16	B-1213-012-000 121213	... Oil supply felt retainer	1
				17	B-1620-051-000 511620	Feed eccentric	1
				18	B-1621-051-000 511621	Feed eccentric body	1
				19	SS-8660970-SP 6651ph	... Screw	1
				20	SS-8660610-TP	... Screw	1
				21	B-1621-012-A00 121621 (A)	Connecting screw, for crank connecting rod	1

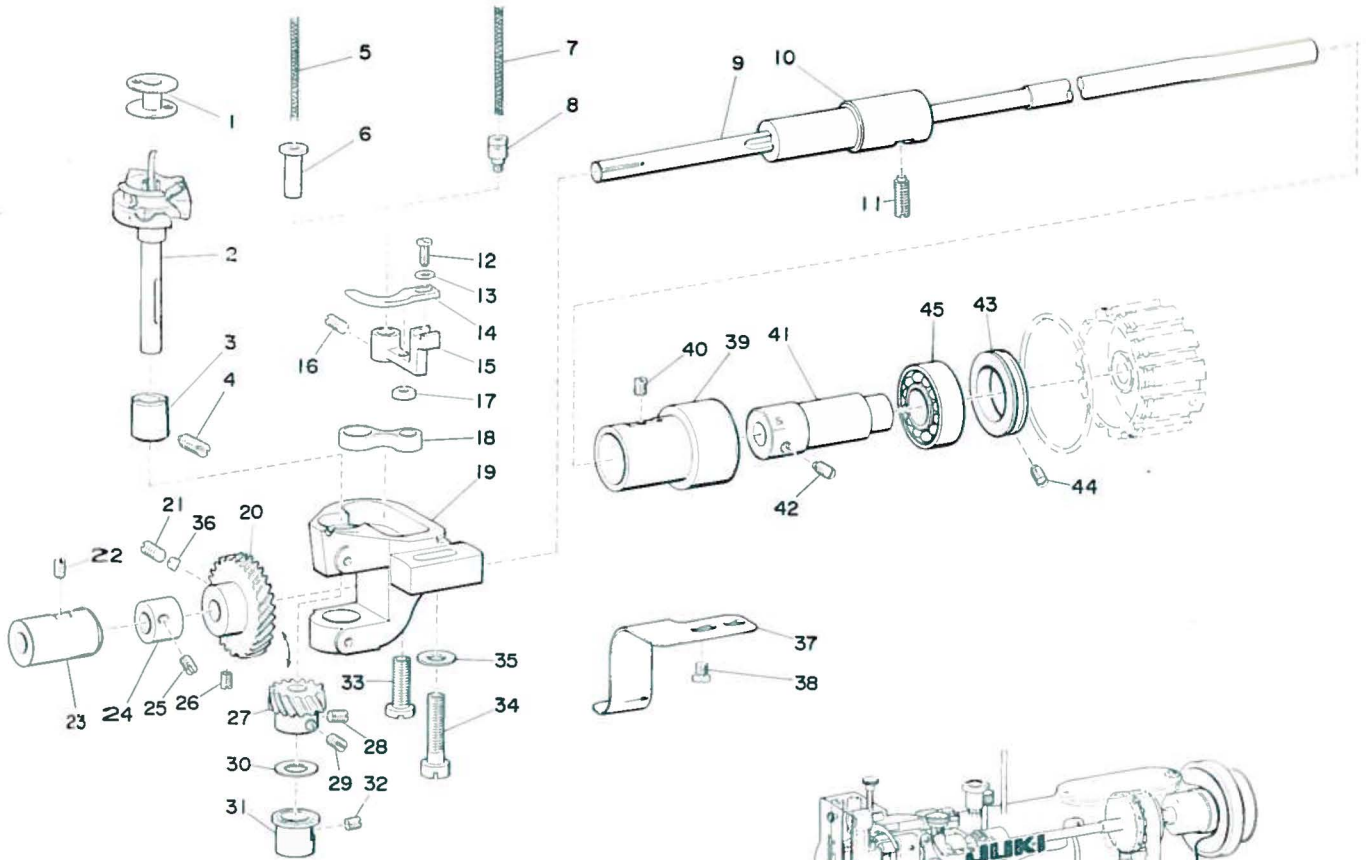
(Continued from page 8)

41	CS-1401012-SC S14001	Feed rock shaft thrust collar	2
42	SS-8150440-SP 1558ph	... Screw	4
43	NS-6680410-SP N681ph	Nut, for No. 19	1
44	B-1616-055-000	Feed rock shaft crank	1
45	SS-6121610-SP 1221ph	... Clamp screw	1
46	B-1601-051-000 511601	Feed rock shaft	1
47	B-1609-051-000 511609	Feed rock shaft rear bushing	1
48	SS-8152030-SP 1556ph	... Screw	1

EXCLUSIVE PARTS FOR MODEL LU-53

4	B-1602-053-000 531602	Feed bar	1
44	B-1616-053-000 531616	Feed rock shaft crank	1

SEWING HOOK SHAFT COMPONENTS

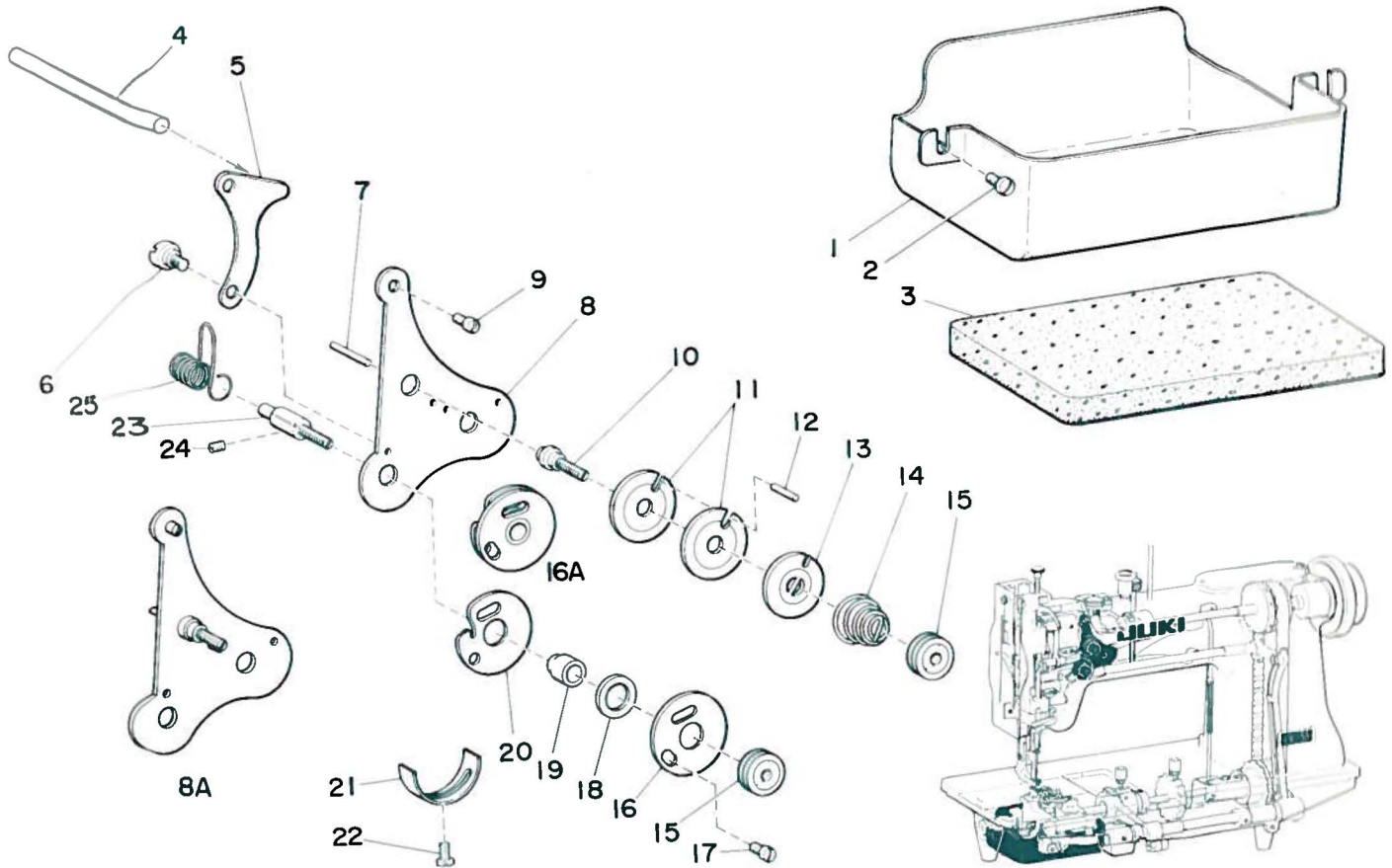


Ref. No.	Part No.	Description	Amt. Req.
1	B 9117-051-000 519117	Bobbin	1
*2	B 1830-055-0A0	Vertical-axis sewing hook assembly	1
3	B 1814-051-000 511814	Hook driving shaft upper bushing	1
4	SS 8151350-SK 1551fh	• • • Screw	1
5	B 1204-051-000 511204	Oil wick, for crank pin	1
6	B 1823-051-000 511823	Bobbin case opening lever crank pin	1
7	B 1204-051-000 511204	Oil wick, for crank screw stud	1
8	B 1821-041-000 511821	Bobbin case opening lever crank screw stud	1
*9	B 1801-055-000	Hook shaft	1
10	B 1804-051-000 511804	Hook shaft intermediate bushing	1
11	SS 8151550-SP 1551ph	• • • Screw	1
12	SS 6090620-SP 0920ph	Screw, for bobbin case opening lever	1
13	WP 0371016-SD W371p	• • • Washer	1
14	B 1824-051-000 511824	Bobbin case opening lever	1
15	B 1822-051-000 511822	Bobbin case opening lever crank	1
16	SS 8150710-SP 1555ph	Screw, for crank pin	1
17	NS 6110420-SP N112ph	Nut, for crank screw stud	1
18	B 1820-051-000 511820	Bobbin case opening lever link	1
19	B 1811-051-000 511811	Hook driving shaft saddle	1
20	B 1816-051-000 511816	Hook shaft gear	1
21	SS 8660410-SK 6653fh	• • • Screw	1
22	SS 8152030-SP 1556ph	Screw, for front bushing	1
23	B 1802-053-000 511802	Hook shaft front bushing	1

Ref. No.	Part No.	Description	Amt. Req.
24	B-1840-051-000 511840	Hook shaft feed eccentric	1
25	SS 8150580-SP 15511ph	• • • Screw	1
26	SS 8660810-TP 6661ph	Screw, for hook shaft gear	1
27	B-1817-051-000 511817	Hook driving shaft gear	1
28	SS 8660530-SK 6661fh	• • • Screw	1
29	SS 8660670-SK 6656fh	• • • Screw	1
30	B-1818-051-000 511818	Hook driving shaft gear thrust washer	1
31	B-1815-051-000 511815	Hook driving shaft lower bushing	1
32	SS 8150710-SP 155ph	• • • Screw	1
33	SS 6153040-SP 1510ph	Clamp screw, for hook driving shaft saddle	1
34	SS-7762840-SP 7621ph	Screw, for hook driving shaft saddle	1
35	B 1812-051-000 511812	• • • Washer	1
36	B 1833-053-000 531833	Lock pin, for hook shaft gear	2
37	B-1806-051-000 511806	Hook shaft timing indicator	1
38	SS-7090520-SP 0921ph	• • • Screw	2

(Continued to page 11)

THREAD CONTROLLER COMPONENTS



Ref. No.	Part No.	Description	Amt. Rep.
1	B-1839-053-000 511839	Hook driving shaft saddle oil splashing cover	1
2	SS-7110410-SP 1131ph	. . . Screw	2
3	B-1841-053-000 511841	. . . Oil drip felt	1
4	B-3122-053-000 513122	Thread release lever pushing bar	1
5	B-3134-051-000 513134	Thread release lever	1
6	SD-0470281-SP D017001h	. . . Screw	2
7	B-3127-051-000 513127	Thread release pin	5
8	B-3121-051-000 513121	Thread controller base	1
9	SS-7110720-SP 1130ph	. . . Screw	1
(Continued from page 10)			
39	B-1807-051-000 511807	Hook shaft rear bushing (1)	1
40	SS-8152030-SP 1551ph	. . . Screw	1
41	B-1808-051-000 511808	Hook shaft rear bushing (2)	1
42	SS-8150750-SP 1553ph	. . . Screw	2
43	B-1809-051-000 511809	Hook shaft bearing retaining collar	1
44	SS-8090530-TP 0958ph	. . . Screw	3
45	B-1219-051-000 511219	Hook shaft bearing	1

Ref. No.	Part No.	Description	Amt. Req.
10	B-3124-051-000 513124	Thread tension stud	1
11	B-3126-051-000 513126	Thread tension disc	2
12	B-3131-051-000 513131	. . . Pin	1
13	B-3132-051-000 513132	. . . Releasing washer	1
*14	B-3129-051-000 513129	Thread tension spring	1
15	B-3125-012-000 123125	Thread tension stud nut	2
16	B-3137-051-00D 513137 (4)	Take-up spring guide disc	1
17	SS-4080510-SP 0822ph	. . . Screw	1
18	B-3137-051-00C 513137 (3)	Take-up spring guide stud	1
19	B-3137-151-00A 513137 (1)	Take-up spring guide taper stud	1
20	B-3137-051-00B 513137 (2)	Take-up spring guide disc, intermediate	1
21	B-3138-051-000 513138	Take-up spring adjusting plate	1
22	SS-7090520-SP 0921ph	. . . Screw	1
23	B-3123-051-000 513123	Take-up spring stud	1
24	SS-8111251-SP 1158ph	. . . Screw	1
25	B-3128-051-000 513128	Take-up spring	1

EXCLUSIVE PARTS FOR MODEL LU-53

2	B-1830-053-0AO 511830S	Vertical-axis sewing hook assembly	1
9	B-1801-053-000 511801	Hook shaft	1

EXCLUSIVE PART FOR MODEL LU-53

14	B-3129-053-000	Thread tension spring	1
----	----------------	-----------------------	---

NUMERICAL INDEX OF PARTS

Part No.	Page	Ref. No.	Part No.	Page	Ref. No.	Part No.	Page	Ref. No.	Part No.	Page	Ref. No.
EXCLUSIVE PARTS											
B-1103-051-000	1	8	B-1218-051-000	2	23	B-1428-051-000	3	16	B-1515-051-000	5	16
511103			511218			511428			511515		
B-1104-051-000	1	27	B-1219-051-000	2	22	B-1429-051-000	3	19	B-1525-053-000	5	6
511102(1)			511219			511429			531525		
B-1105-051-000	1	25	B-1219-051-000	10	45	B-1431-051-000	3	21	B-1536-055-000	8	27
511102(2)			511219			511431					
B-1106-051-000	1	26	B-1220-053-000	7	1	B-1434-051-000	3	26	B-1601-051-000	8	46
511102(3)			531220			511434			511601		
B-1109-053-000	1	22	B-1220-055-M00	2	17	B-1435-051-000	3	27	B-1602-053-000	8	4
531109			B-1227-051-000	2	*24	511435			531602		
B-1112-053-000	1	24	511227			B-1437-051-000	3	13	B-1602-055-000	8	*4
531112			B-1227-053-000	2	24	511437			B-1603-051-000	8	37
B-1113-053-000	1	21	531227			B-1438-051-0A0	3	12	511603		
531113			B-1233-012-000	2	27	511438S			B-1604-051-000	8	1
B-1114-051-000	1	4	B-1301-051-000	6	12	B-1450-053-000	4	14	511604		
511114			511301			531450			B-1605-051-000	8	2
B-1128-051-000	1	11	B-1302-051-000	6	9	B-1451-053-000	4	16	511605		
511128			511302			B-1452-053-000	4	15	B-1607-051-000	8	39
B-1129-051-000	1	13	B-1303-053-000	7	3	531452			511607		
511129			531303			B-1453-053-000	4	8	B-1609-051-000	8	47
B-1130-051-000	1	14	B-1303-055-000	6	13	531453			511609		
511130			B-1304-053-000	7	11	B-1454-053-00A	4	7	B-1611-055-000	8	6
B-1131-051-000	1	15	531304			531454(1)					
511131			B-1305-053-000	7	14	B-1454-053-00B	4	9	B-1613-053-000	8	5
B-1140-051-000	1	9	531305			531454(2)			531613		
511140			B-1305-055-000	6	16	B-1455-053-000	4	5	B-1614-051-000	9	14
B-1150-051-000	1	1	B-1306-053-000	7	7	531455			511614		
511150			531303(3)			B-1456-053-000	4	4	B-1614-057-000	8	9
B-1152-051-000	1	2	B-1307-053-000	7	5	531456			581614		
511152			531303(4)			B-1457-053-000	4	2	B-1616-053-000	8	44
B-1155-053-000	1	5	B-1307-053-M00	6	21	B-1457-055-000	4	*2	531616		
531155			B-1308-053-000	7	4	B-1458-053-000	4	1	B-1616-055-000	8	44
B-1157-009-000	1	17	531303(5)			531458			B-1618-051-000	9	13
91157			B-1308-055-000	6	22	B-1459-053-00A	4	23	511618		
B-1201-051-000	2	*15	531303(6)			531459(1)			B-1620-051-000	9	17
511201			B-1309-053-000	7	8	B-1459-053-00B	4	20	511620		
B-1201-053-000	2	15	531303(7)			531459(2)			B-1620-057-000	8	12
531201			B-1309-055-000	6	18	B-1460-053-00A	5	12	571620		
B-1202-051-000	2	10	B-1310-053-000	7	9	531460(1)			B-1621-012-A00	8	19
511202			531303(8)			B-1460-053-00B	5	14	121621(A)		
B-1203-051-000	2	13	B-1311-053-000	7	13	531460(2)			B-1621-012-A00	9	21
511203			531303(9)			B-1461-053-00A	5	19	121621(A)		
B-1204-051-000	2	1	B-1311-055-000	6	19	531461(1)			B-1621-051-000	9	18
511204			B-1312-055-000	8	33	B-1461-053-00B	5	18	511621		
B-1204-051-000	2	14	B-1313-055-000	8	31	531461(2)			B-1621-055-000	8	16
511204			531303(10)			B-1462-053-00B	5	17	B-1621-405-000	8	15
B-1204-051-000	2	16	B-1314-053-000	8	30	531462			4051621		
511204			571314			B-1465-053-000	4	24	B-1622-057-000	8	13
B-1204-051-000	3	24	B-1315-055-000	6	17	531465			571622		
511204			B-1401-053-000	3	7	B-1466-053-000	5	25	B-1623-051-000	9	5
B-1204-051-000	4	10	531401			531466			511623		
511204			B-1408-051-000	6	7	B-1467-053-00A	5	24	B-1623-057-000	8	29
B-1204-051-000	4	21	511408			531467(1)			571623		
511204			B-1411-053-000	3	4	B-1467-053-00B	5	21	B-1624-051-000	9	11
B-1204-051-000	6	1	531411			531467(2)			511624		
511204			B-1412-051-000	3	5	B-1467-053-00C	5	22	B-1624-057-000	8	21
B-1204-051-000	6	6	511412			531467(3)			571624		
511204			B-1419-053-000	3	8	B-1468-053-000	5	23	B-1625-057-000	8	22
B-1204-051-000	10	5	531419			531468			571625		
511204			B-1420-053-000	3	3	B-1469-053-000	5	20	B-1626-051-000	9	10
B-1204-051-000	10	7	531420			531469			511626		
511204			B-1421-051-000	3	1	B-1470-053-000	5	26	B-1626-057-000	8	20
B-1205-051-000	2	9	511421			531470			571626		
511205			B-1423-051-000	1	18	B-1501-040-000	5	4	B-1627-051-000	9	3
B-1206-051-000	2	6	511423			401501			511627		
511206			B-1425-051-000	3	14	B-1502-051-000	5	7	B-1628-051-000	9	4
B-1207-051-000	2	5	511425			511502			511628		
511207			B-1426-051-000	3	15	B-1503-051-A00	5	3	B-1636-053-000	9	6
B-1210-051-000	2	2	511426			511503A			531636		
511210			B-1428-051-000	3	16	B-1503-051-B00	5	9	B-1637-053-000	9	8
B-1213-012-000	4	13	511428			511503B			531637		
121213			B-1429-051-000	10	45	B-1504-056-000	5	10	B-1637-055-000	8	25
B-1213-012-000	8	11	511429			511504					
121213			B-1431-051-000	3	21	B-1505-053-000	5	28	B-1638-051-000	8	28
B-1213-012-000	9	16	511431			531505			511638		
121213			B-1434-051-000	3	26	B-1507-051-000	5	1	B-1638-051-000	4	9
B-1214-019-000	6	8	B-1435-051-000	3	27	511507			511638		
191214			511435			B-1509-051-000	5	31	B-1639-051-000	8	26
B-1216-051-000	2	19	B-1437-051-000	3	13	511509			511639		
511216			511437			B-1512-051-000	5	15	B-1639-051-000	8	32
B-1217-051-000	2	20	B-1438-051-0A0	3	12	511512			511639		
511216(2)			511438S								

Part No.	Page	Ref. No.	Part No.	Page	Ref. No.	Part No.	Page	Ref. No.	Part No.	Page	Ref. No.
B-1639 051 000 511639	9	7	B-3129 053 000	11	14	SD-0790801-SP D079406h	3	23	SS-8150710-SP 1555ph	10	16
B-1702 012 000 121702	4	12	B-3131 051 000 513131	11	12	SD-0800481-SP D080008h	5	29	SS-8150710-SP 1555ph	10	32
B-1702 012 000 121702	8	10	B-3132 051 000 513132	11	13	SD-0801601-SP D080013h	5	30	SS-8150750-SP 1553ph	5	8
B-1702 012 000 121702	9	15	B-3134 051 000 513134	11	5	SD-0950801-SP D095002h	3	25	SS-8150750-SP 1553ph	10	42
B-1801 053 000 531801	10	9	B-3137 051 00A 513137(1)	11	19				SS-8151150-SP 1552ph	4	19
B-1801 055 000	10	*9	B-3137 051 00B 513131(2)	11	20	SS-2090710-SP 0901ph	1	16	SS-8151150-SP 1552ph	6	3
B-1802 053 000 531802	10	23	B-3137 051 00C 513137(3)	11	18	SS-2110910-SP 1101ph	1	23	SS-8151150-SP 1552ph	9	2
B-1804 051 000 511804	10	10	B-3137 051 00D 513137(4)	11	16	SS-3090610-SP 0978ph	1	10	SS-8151160-SK 1563fh	3	2
B-1806 051 000 511805	10	37	B-3138 051 000 513138	11	21	SS-4080610-SP 0822ph	11	17	SS-8151230-SP 1557ph	2	18
B-1807 051 000 511807	10	39	B-3409 053 000 533409	5	32	SS-5080710-SP 0839ph	8	3	SS-8151280-SP 15512ph	4	18
B-1808 051 000 511808	10	41	B-3410 051 000 513410	5	36	SS-6090620-SP 0930ph	10	12	SS-8151350-SK 1551fh	10	4
B-1809 051 000 511809	10	43	B-3413 053 000 533413	5	37	SS-6090910-SP 0925ph	5	5	SS-8151350-SP 1551ph	2	11
B-1811 051 000 511811	10	19	B-3414 051 000 513414	5	40	SS-6121610-SP 1221ph	8	45	SS-8151550-SP 1554ph	8	40
B-1812 051 000 511812	10	35	B-3416 051 000 513416(1)	5	41	SS-6151440-SP 1525ph	3	20	SS-8151550-SP 1554ph	10	11
B-1814 051 000 511814	10	3	B-3417 051 000 513416(2)	5	44	SS-6153040-SP 1540ph	10	33	SS-8151770-SK 1559ph	8	18
B-1815 051 000 511815	10	31	B-3501 051 000 513501	2	12	SS-6661110-SK 6621fh	6	23	SS-8151780-SP 1567ph	2	26
B-1816 051 000 511816	10	20	B-9117 051 000 519117	10	1	SS-7060310-SP 0622ph	3	9	SS-8151780-SP 1567ph	8	35
B-1817 051 000 511817	10	27				SS-7080510-SP 0328ph	3	10	SS-8151780-SP 1567ph	8	17
B-1818 051 000 511818	10	30	THRUST COLLAR			SS-7090520-SP 0921ph	10	38	SS-8152030-SP 1556ph	2	25
B-1820 051 000 511820	10	18	CS-0510713-SC S05101	5	38	SS-7090520-SP 0921ph	11	22	SS-8152030-SP 1556ph	8	48
B-1821 041 000 511821	10	8	CS-0951015-SH S09502h	9	1	SS-7090610-SP 0921ph	4	17	SS-8152030-SP 1556ph	10	22
B-1822 051 000 511822	10	15	CS-1401012-SC S14001	8	41	SS-7090910-SP 0911ph	3	6	SS-8152030-SP 1556ph	10	40
B-1823 051 000 511823	10	6	NEEDLE			SS-7090910-SP 0911ph	5	2	SS-8152080-SP 1561ph	8	36
B-1824 051 000 511824	10	14	MD-1300-2300	3	11	SS-7090910-SP 0911ph	5	11	SS-8620610-SK 6252fh	7	6
B-1830 053 0A0 531830S	10	2	NUT			SS-7110410-SP 1131ph	11	2	SS-8621340-SP 6255ph	7	2
B-1830 055 0A0	10	*2	NS-6080210-SP N081ph	8	14	SS-7110510-SP 1121ph	5	42	SS-8660410-SK 6653fh	10	21
B-1833 053 000 531833	6	24	NS-6110310-SP N112ph	4	22	SS-7110540-SP 1127ph	5	39	SS-8660530-SK 6661fh	10	28
B-1833 053 000 531833	10	36	NS-6110420-SP N112ph	10	17	SS-7110720-SP 1130ph	11	9	SS-8660610-TP 6651ph	9	20
B-1839 053 000 531839	11	1	NS-6160520-SP N161ph	3	22	SS-7111310-SP 1136ph	5	13	SS-8660670-SK 6656fh	10	29
B-1840 051 000 511840	10	24	NS-6620310-SP N621ph	3	17	SS-7151210-SP 1522ph	3	28	SS-8660810-TP 6661ph	10	26
B-1841 053 000 531841	11	3	NS-6660430-SP N661ph	4	3	SS-7181750-TP 6822ph	6	10	SS-8660970-SP 6651ph	9	19
B-1905 053 000 531905	6	4	NS-6660430-SP N661ph	4	11	SS-7661540-SP 6623ph	4	6	SS-8680730-SK 6853fh	2	4
B-1906 051 000 511906	6	2	NS-6680410-SP N681ph	8	43	SS-7681750-TP 6822ph	2	8	SS-8680730-SK 6853fh	7	10
B-1907 051 000 511907	6	5	NS-6700420-SP N705ph	3	29	SS-7762840-SP 7621ph	10	34	SS-8680730-SK 6853fh	7	12
B-3101 053-00 33101	1	6				SS-8090530-TP 0958ph	10	44	SS-8681650-TP 6851ph	2	7
B-3106 019 000 93106	1	7	COTTER PIN			SS-8090540-1P 0956ph	6	14	SS-8681650-TP 6851ph	6	11
B-3121 051 000 13121	11	8	PD-0231100-OB DP25126	5	35	SS-8110510-SP 1151ph	1	12	SS-8688053-SK 6857fh	2	3
B-3122 053 000 33122	11	4	TAPER PIN			SS-8110510-SP 1151ph	8	23	SS-9090640-SP 0981ph	5	27
B-3123 051 000 13123	11	23	PT-0301600-SO TP3016	3	18	SS-8110510-SP 1151ph	8	38	SS-9111010-SK 1182fh	1	19
B-3124 051 000 13124	11	10	SD-0260271-SP D026001h	9	12	ST-8110750-SP 1157ph	8	24	SS-9151440-SP 1592ph	8	8
B-3125 012 000 23125	11	15	SD-0470281-SP D047001h	11	6	SS-8111251-SP 1158ph	11	24			
B-3126 051 000 13126	11	11	SD-0550801-SP D055007h	5	43	SS-8150440-SP 1558ph	8	42	WASHER		
B-3127 051 000 13127	11	7	SD-0630241-SD D06301	1	3	SS-8150580-SP 15511ph	10	25	WP-0371016-SD W371p	10	13
B-3128 051 000 13128	11	25	SD-0790361-SP D079401h	5	33	SS-8150710-SP 1555ph	2	21	WP-0480856-SP W431ph	1	20
B-3129 051 000 13129	11	*14	SD-0790361-SP D079401h	5	34				WS-0651510-KP SW651ph	8	7



TOKYO JUKI INDUSTRIAL CO., LTD.

FIRST
EDITION